

CAT5e



Cat5e Riser Unshielded

SKU: TS-RBC/5e-BL

24AWG • 4 Twisted Pairs • CMR

U/UTP • 350MHz • Solid Bare Copper



Lengths Available

- 1000ft

Jacket Colors



Key Features

- Bandwidth tested up to 350 MHz
- Suitable for 1 Gigabit and 2.5 Gigabit Ethernet up to 328 ft
- In compliance with ANSI/TIA 568.2-D
- RoHS-3 Compliant
- Easily identified color striped pairs
- Supports Power over Ethernet: PoE/PoE+/PoE++ (IEEE 802.3af/at/bt) 4PPoE up to 100W
- Sequential footage markings every 2ft

Technical Data

Insulation

PE

Average Thickness (mm) 0.205

Min Point Thickness (mm) 0.198

Conductor Insulation Dia. (±0.02mm) 0.86

Twisted Pair Dia. (±0.02mm) 1.72

Ripcord Nylon

Spline Not Present

Polyethylene Tape Not Present

Shielding U/UTP

Conductor

Solid Bare Copper

Size 24AWG

Conductor Dia. (±0.05mm) 0.46

Color of Pairs

Pair 1 Blue- White/Blue

Pair 2 Orange- White/Orange

Pair 3 Green- White/Green

Pair 4 Brown- White/Brown

Cable Jacket

PVC

Average Thickness (mm) 0.50

Min. Point Thickness (mm) 0.45

Outer Diameter (±0.2mm)

4.60

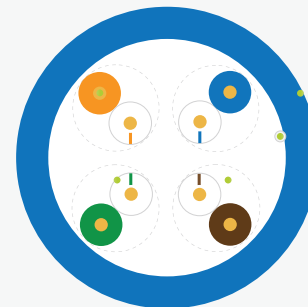
Standards Reference

ANSI/TIA
568-2.D

ISO/IEC
11801

Conductor

Insulation



Jacket

Ripcord

Twisted Pairs



Cable ID: 5ECMR UTP

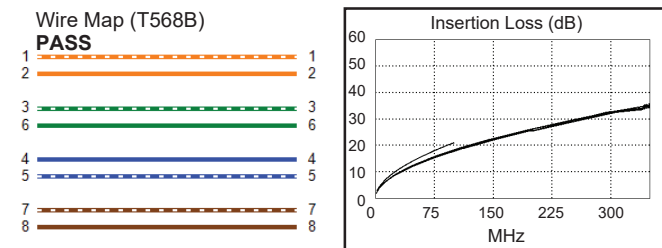
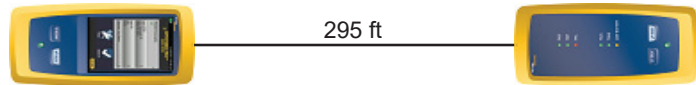
Test Limit: TIA Cat 5e Perm. Link (+PoE)
Limits Version: V7.6
Date / Time: 04/11/2022 12:33:24 PM
Operator: LIXIAOHONG
Headroom 10.9 dB (NEXT 3,6-4,5)
Cable Type: Cat 5e U/UTP
NVP: 69.3%

Main: Versiv
S/N: 1924100
Software Version: V6.7 Build 1
Calibration Date: 11/14/2020
Adapter: DSX-8000 (DSX-PLA804)
S/N: 4523169

Test Summary: PASS

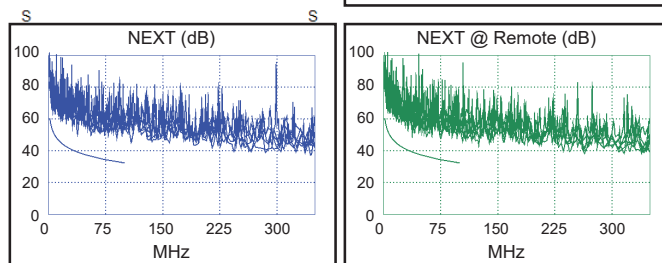
Remote: Versiv
S/N: 1917273
Software Version: V6.7 Build 1
Calibration Date: 11/14/2020
Adapter: DSX-8000R (DSX-PLA804)
S/N: 4523168

Length (ft), Limit 295	[Pair 3,6]	295
Prop. Delay (ns), Limit 498	[Pair 1,2]	443
Delay Skew (ns), Limit 44	[Pair 1,2]	10
Resistance (ohms), Limit 21.00	[Pair 7,8]	17.06
Resist. Unbal. (ohms), Limit 0.510	[Pair 4,5]	0.061
Resist. P2P Unbal. (ohms), Limit 0.590	[Pair 4,5-7,8]	0.053
Insertion Loss Margin (dB)	[Pair 1,2]	2.7
Frequency (MHz)	[Pair 1,2]	100.0
Limit (dB)	[Pair 1,2]	21.0

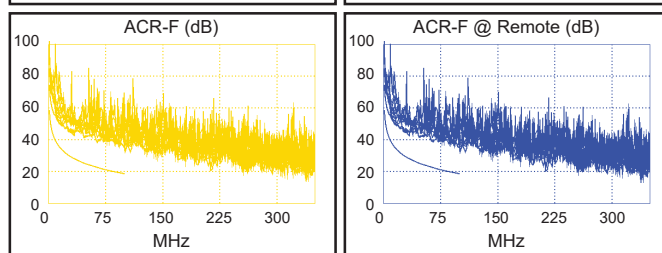


Worst Case Margin Worst Case Value

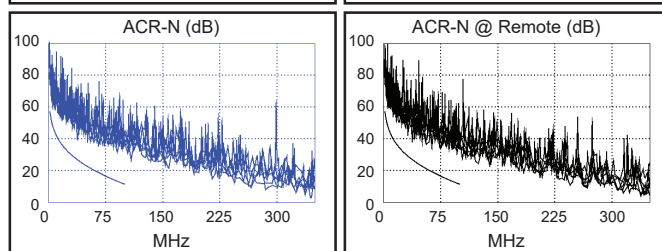
PASS	MAIN	SR	MAIN	SR
Worst Pair	3,6-4,5	3,6-4,5	3,6-4,5	4,5-7,8
NEXT (dB)	11.1	10.9	14.7	13.2
Freq. (MHz)	38.0	37.8	90.0	75.3
Limit (dB)	39.2	39.2	33.1	34.3
Worst Pair	3,6	4,5	4,5	7,8
PS NEXT (dB)	13.3	13.5	16.4	14.2
Freq. (MHz)	38.0	37.8	90.0	75.8
Limit (dB)	36.2	36.2	30.1	31.3



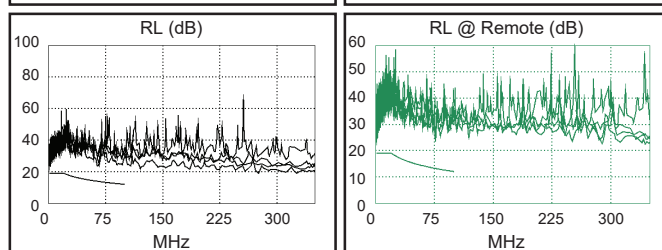
PASS	MAIN	SR	MAIN	SR
Worst Pair	1,2-4,5	4,5-1,2	4,5-3,6	3,6-4,5
ACR-F (dB)	14.1	14.0	16.1	15.9
Freq. (MHz)	4.9	4.9	100.0	100.0
Limit (dB)	44.9	44.9	18.6	18.6
Worst Pair	4,5	4,5	1,2	4,5
PS ACR-F (dB)	14.8	14.6	16.4	16.2
Freq. (MHz)	16.9	16.9	100.0	100.0
Limit (dB)	31.1	31.1	15.6	15.6



N/A	MAIN	SR	MAIN	SR
Worst Pair	3,6-4,5	3,6-4,5	3,6-4,5	3,6-4,5
ACR-N (dB)	12.8	12.6	17.7	19.0
Freq. (MHz)	38.0	37.8	90.0	96.5
Limit (dB)	26.7	26.8	13.3	12.0
Worst Pair	4,5	4,5	4,5	4,5
PS ACR-N (dB)	14.6	14.6	19.4	19.2
Freq. (MHz)	5.0	5.1	90.0	90.3
Limit (dB)	45.9	45.7	10.3	10.2



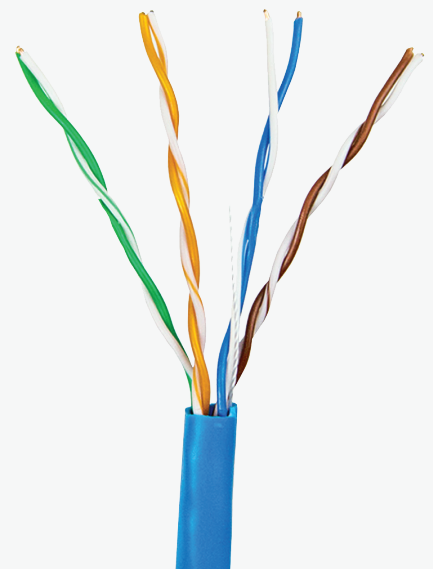
PASS	MAIN	SR	MAIN	SR
Worst Pair	4,5	3,6	4,5	3,6
RL (dB)	8.9	9.2	9.5	10.5
Freq. (MHz)	3.8	3.8	66.3	76.3
Limit (dB)	19.0	19.0	13.8	13.2



Compliant Network Standards:
 10BASE-T 100BASE-TX 100BASE-T4
 1000BASE-T 2.5GBASE-T ATM-25
 ATM-51 ATM-155 100VG-AnyLan
 TR-4 TR-16 Active TR-16 Passive

Electrical Characteristics

PoE Certification	PoE/PoE+/PoE++ 4PPoE
Maximum PoE Wattage	100W
PoE Application Compatibility	802.3af/at/bt Type 4
TIA 568-2.D Cat5e Permanent Link +PoE	CERTIFIED
Maximum Application Speed @ 295ft	2.5GBASE-T
Nominal Velocity of Propagation (NVP)	70.5
Maximum Operating Voltage	300V
1.0 - 350MHz Impedance (Ω)	100 \pm 15
Maximum Operating Frequency	350MHz
1.0 - 350MHz Delay Skew (ns/100m)	\leq 45
Pair-to-Ground Capacitance Unbalance (pF/km)	\leq 3300
Max. Conductor DC Resistance 20°C (Ω/km)	93.8



Mechanical & Environmental Operating Parameters

Test Object	Jacket	Aging Condition ($^{\circ}\text{C} \times \text{hrs}$)	100 x 168
Test Material	PVC	After Tensile Strength (Mpa)	\geq 85% of unaged
Before- Tensile Strength (Mpa)	\geq 13.8	Aging Condition - Elongation (%)	\geq 50% of unaged
Aging- Elongation (%)	\geq 100	Cold Bend ($-20 \pm 2^{\circ}\text{C} \times 4\text{hrs}$)	No Crack
Min. Bend Radius	2.0cm/0.75in	Operating & Storage Temp.	-40°C to 75°C -40°F to 167°F
Max. Installation Tension	110N/25lb-ft	Installation Temp.	-20°C to 75°C -4°F to 167°F